

# 香港中文大學賽馬會地球保源行動



## 城市規劃與適應氣候變化論壇

香港規劃師學會會長  
麥凱薈博士

2017年2月17日

# 城市規劃與氣候變化的關係

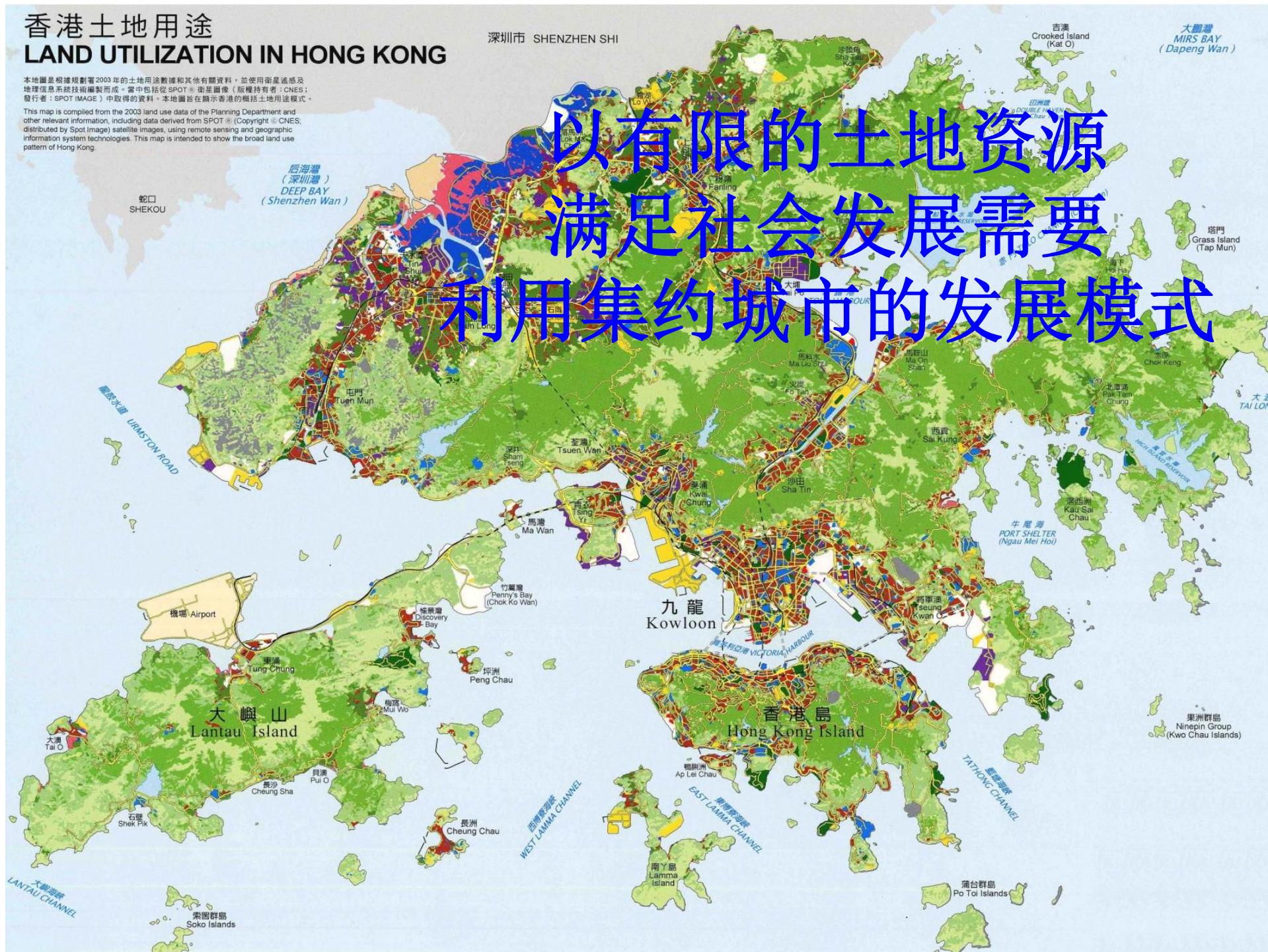
- 天氣變得更冷, 更熱, 更多雨水, 或更乾旱. 總括而言, 天氣變得更反常及更反覆
- 從城市規劃的層面, 如何去適應這些氣候變化?
  - 土地用途, 減少住宅, 商業及工業用地
  - 減低發展密度
  - 減低發展高度
  - 增加綠化地帶, 休憩用地和社區農場
  - 推動可持續發展, 增加保育地帶
  - 建立通風走廊, 考慮微氣候
  - 正視熱島效應問題



# 香港土地用途 LAND UTILIZATION IN HONG KONG

本地圖是根據規劃署2003年的土地用途數據和其他有關資料，並使用衛星遙感及地理信息系統技術編製而成。當中包括從SPOT®衛星圖像（版權持有者：CNES，發行者：SPOT IMAGE）中取得的資料。本地圖旨在顯示香港的概括土地用途模式。  
This map is compiled from the 2003 land use data of the Planning Department and other relevant information, including data derived from SPOT® (Copyright © CNES, distributed by Spot Image) satellite images, using remote sensing and geographic information system technologies. This map is intended to show the broad land use pattern of Hong Kong.

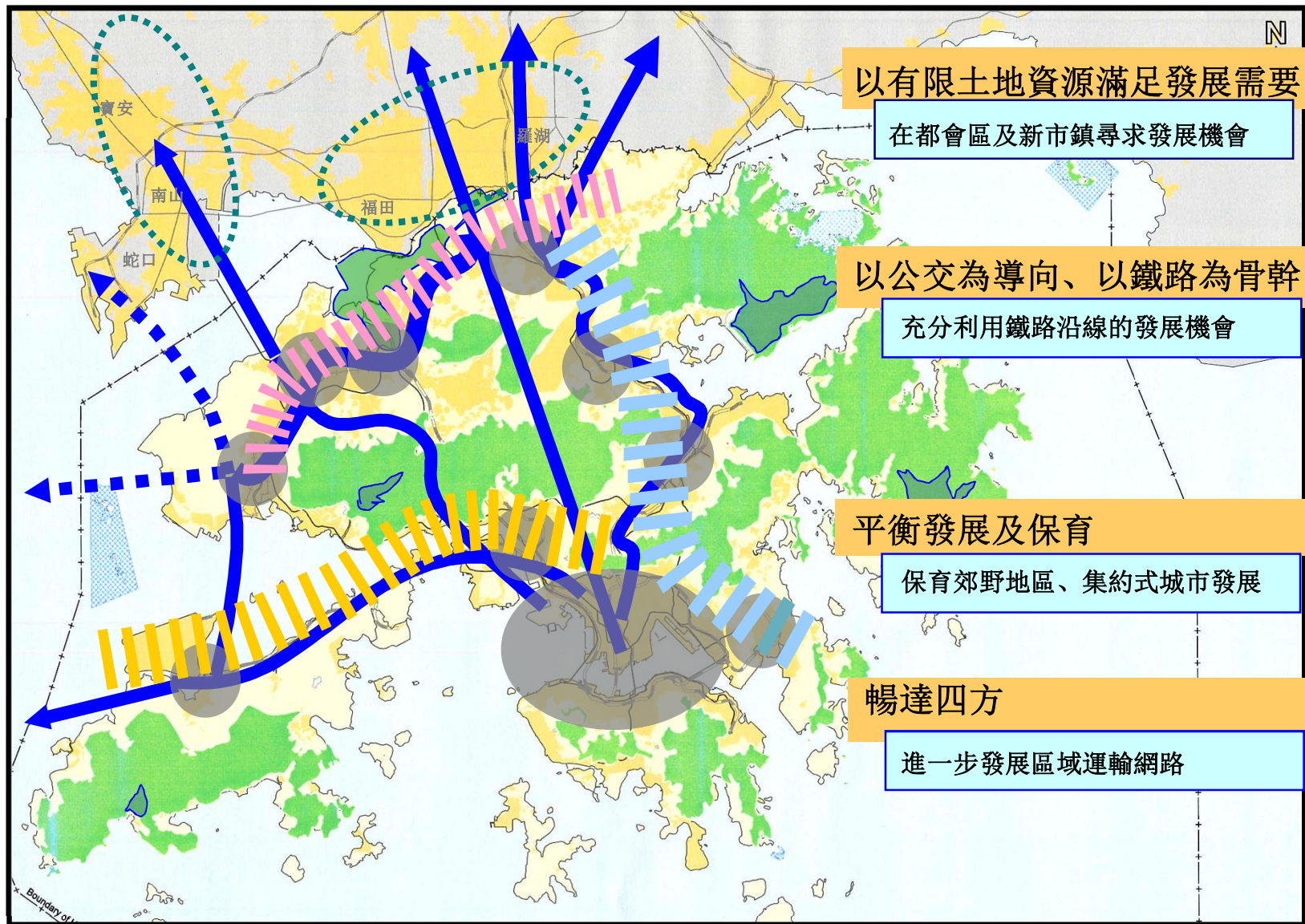
深圳市 SHENZHEN SHI



以有限的土地资源  
满足社会发展需要  
利用集约城市的发展模式



# 香港城市規劃實踐





# 平衡发展及保育

# 香港郊野公园的现况

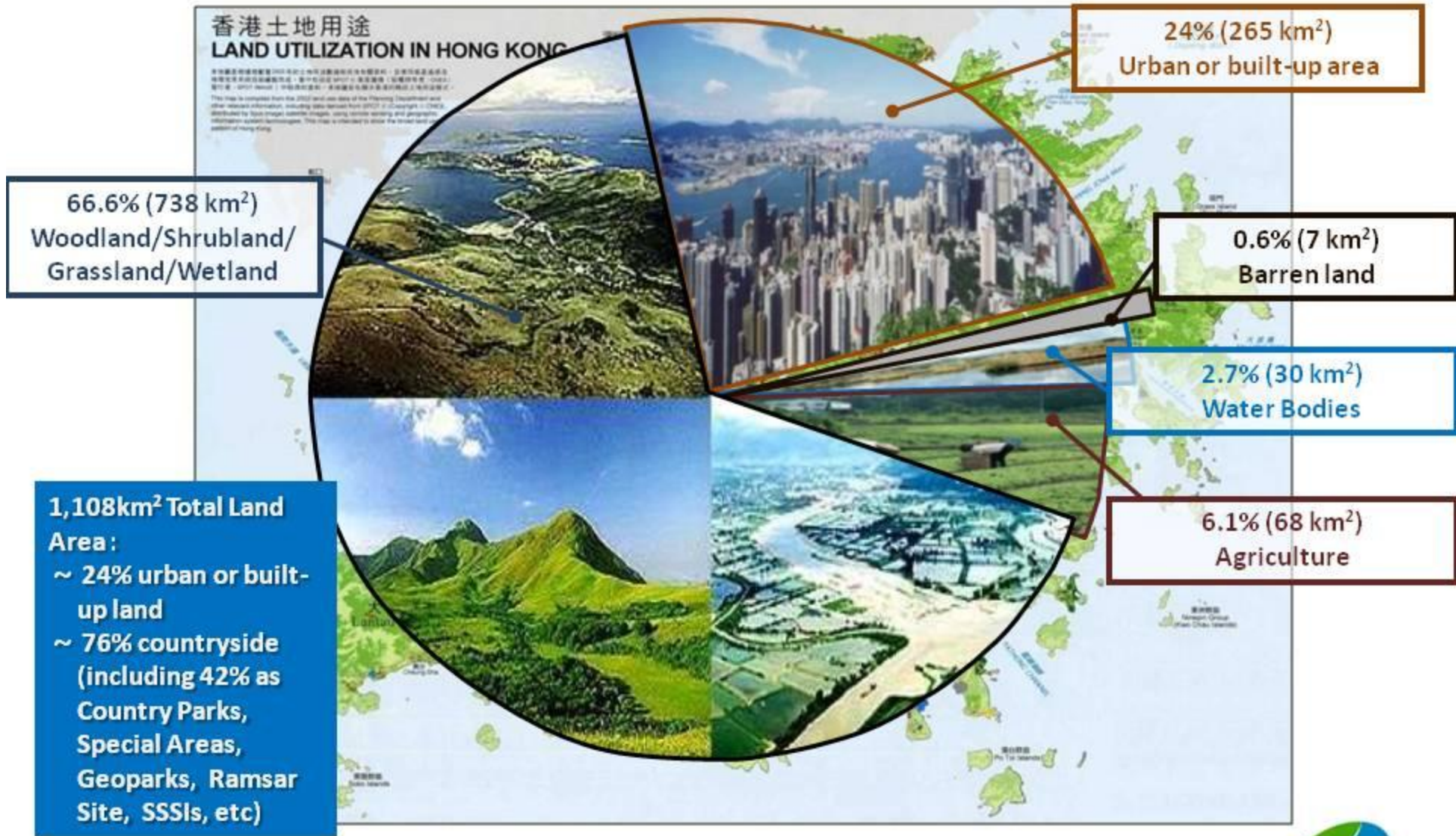
香港的受保護地區  
Protected Areas of Hong Kong



资料来源：渔农自然护理署



# Land Utilisation



## Other Important Facts 其他重要資料

- 90% of population are living within 30 minutes car journey from a country park

百分之九十居住人口可乘搭不超過三十分鐘的車程抵達郊野公園



# 香港過去在規劃上未完善之處

- 就業機會過分集中於市區而忽略新市鎮的工作需求
- 過分依賴市場主導, 發展過速
- 在某些地區發展太密和太高 (屏風樓問題)
- 可持續發展意思不強, 在土地用途上沒有充份考慮微氣候的影響
- 城市內綠化地帶不足
- 農地續漸消失
- 太急促的社區重建
- 沒有好好考慮如何平衡保育及發展 (發展郊野公園?)



# Redefining Diversity

## 多元化規劃及發展 - 綜合性長遠整體規劃

### Comprehensive Planning



Source: WONG W. S. (2009)



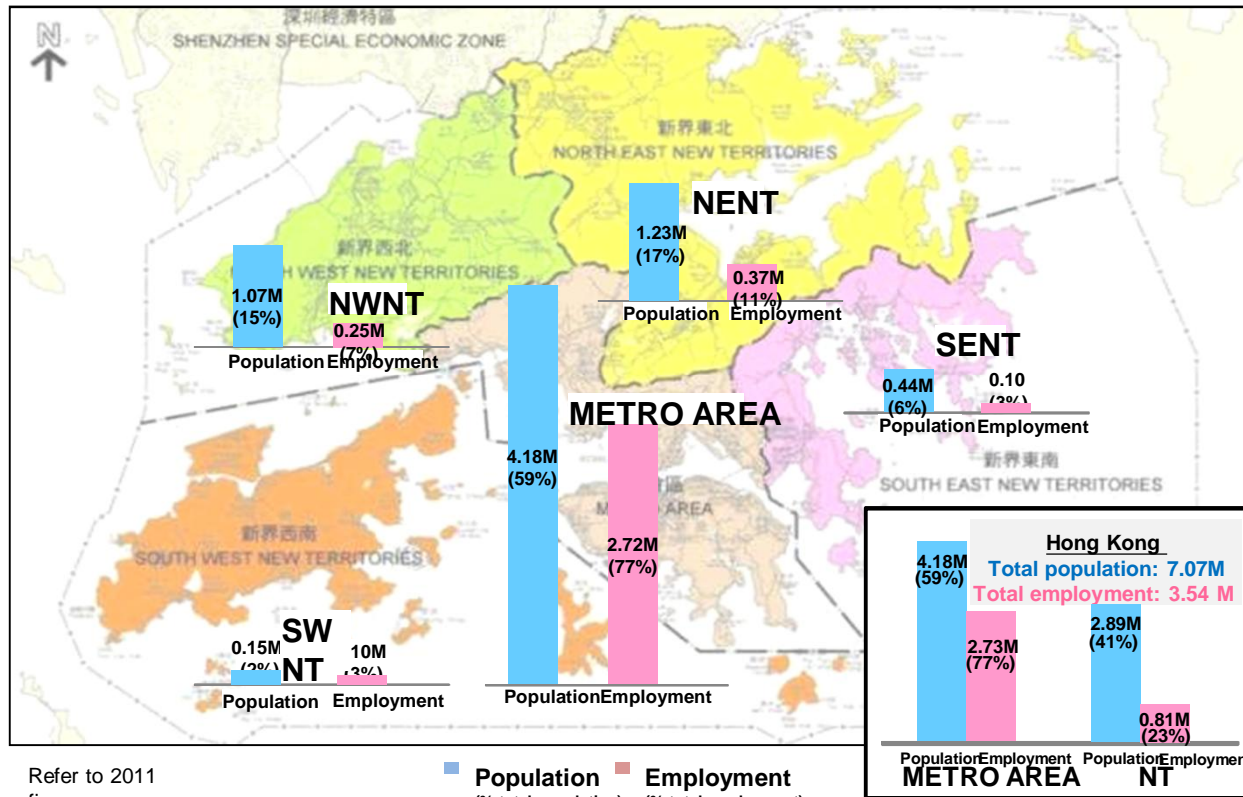
Source: MANSKE M. (2005)

### Organic Growth



# Redressing the Imbalance

## 居住人口和就業機會的不平衡



NT: about 41% of total population (excl. Tsuen Wan & Kwai Tsing), only about 23% of total employment

### Finding a Smart Solution to redress the Imbalanced Development Pattern

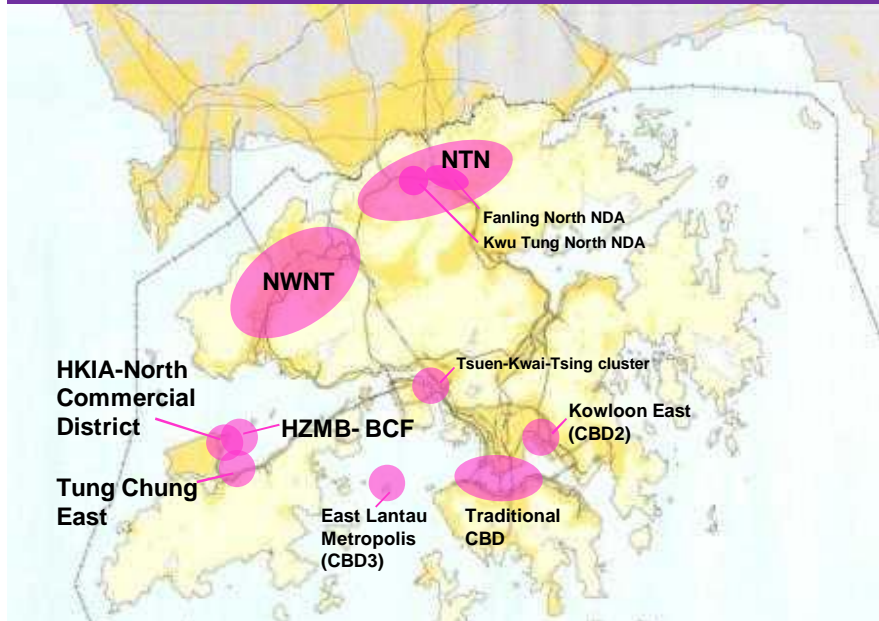
- Employment is still concentrating in the main urban areas
- Elevating employment as an integral consideration in the strategic planning framework



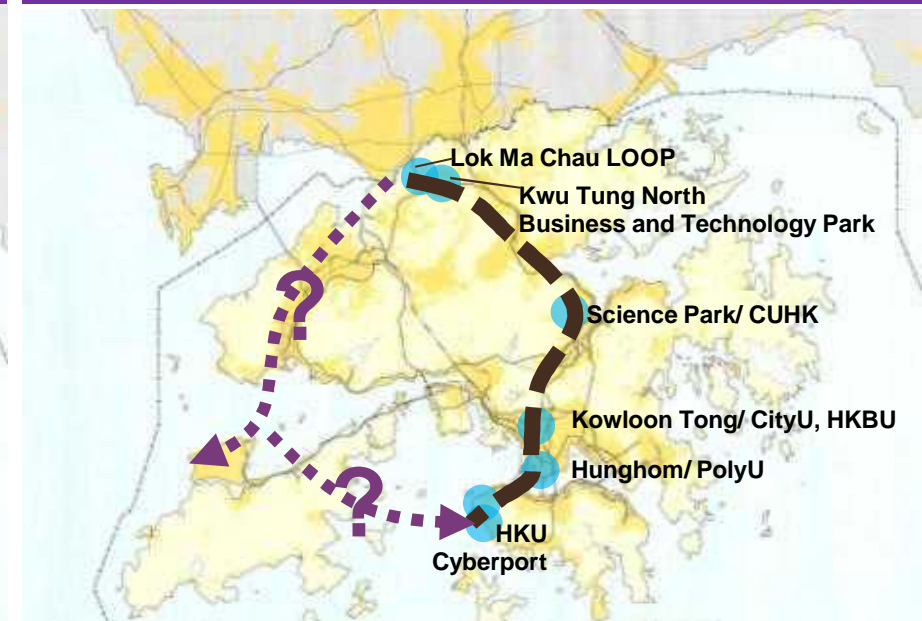
# Networking Homes with Workplaces: 在新發展區制造更多就業機會

- Weaving out an extended urban core, new towns, NDAs and boundary nodes
- Further exploring home-based employment, shared working space, business centres near homes, and workplaces for boosting innovation and creativity

Major Employment Nodes - existing and emerging



Knowledge & Technology Corridor



Shared Working Space



# Integrating Urban-Rural Planning

## 推廣城鄉共融概念



- Blending urban and rural landscapes and activities with the preservation of active agriculture land as far as practicable
- Promoting agriculture and greening
- Exploring beneficial rural uses





# Integrating Urban-Rural Planning

## 廣泛推廣社區綠化及城市農場

**Urban Agriculture = Growing of plants and raising of animals in or around the city**

### Government Initiatives E.g.

- Green Hong Kong Campaign
- Controlled Environment Hydroponic (CEH) R&D Centre



### Private Initiatives E.g.

- Project Grow, To Kwa Wan
- Urban Oasis, Kwun Tong
- Hysan Urban Farm, Causeway Bay



A Community Garden in Jordan Valley Park



Planting racks in the CEH R&D Centre



Hysan Urban Farm (Photo Credit: Hysan Development Co. Ltd)

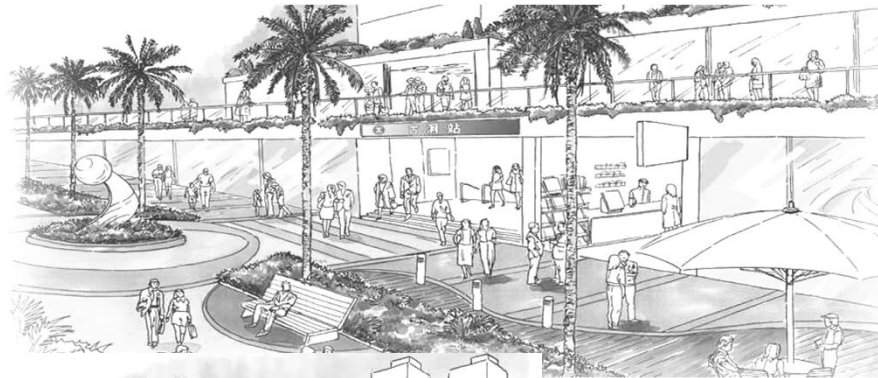


Innovative Use of Bed Racks as Planters at Project Grow

Encouraging more active use of the existing pool of public space (e.g. public parks) for urban agriculture / community farming in a neighbourhood setting

# Promoting Health and Well-being 推廣健康生活概念

- Walkable
- Bikeable
- Health and well-being
- Improved cohesiveness and connectivity between neighbourhoods
- Enjoyable city experience





# Revitalising Heritage & Cultural Space

## 保育有價值的歷史文物



### OTHER INITIATIVES



Lui Seng Chun  
(雷生春)



Former Police Married Quarter-  
PMQ



Central Police Station Revitalization  
Project



Wo Cheong Pawn Shop  
(和昌大押)



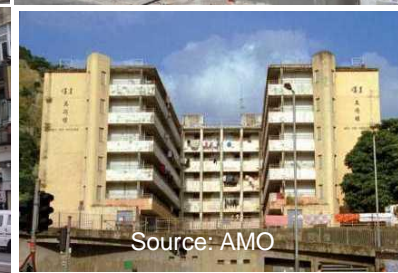
Mei Ho House  
(美荷樓)



Old Central Market - Oasis Central

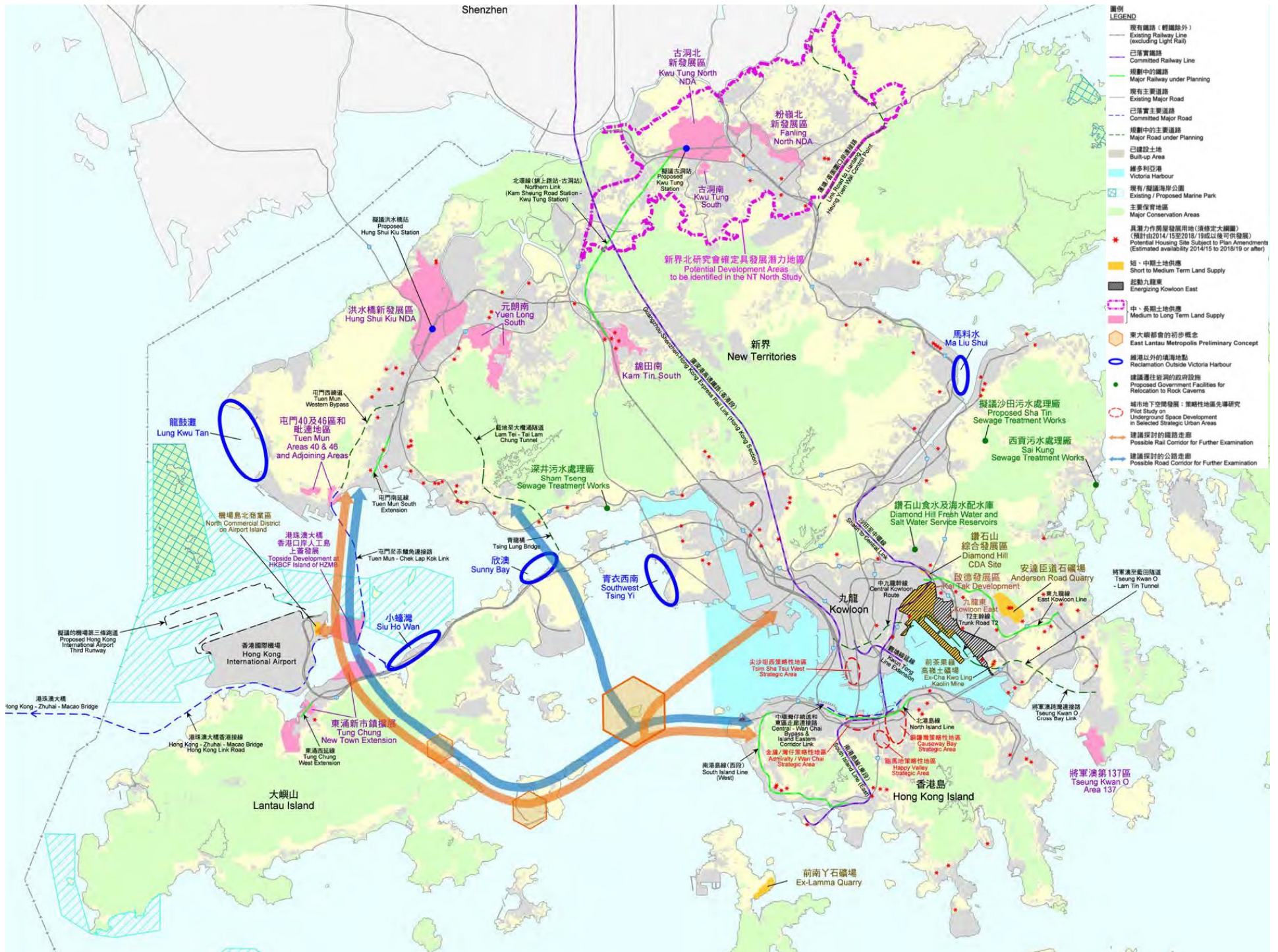


Hong Kong Sheng Kung Hui  
Compound



Source: AMO





- 圖例 LEGEND**
- 現有鐵路 (輕鐵除外)  
Existing Railway Line (excluding Light Rail)
  - 已落實鐵路  
Committed Railway Line
  - 規劃中的鐵路  
Major Railway under Planning
  - 現有主要道路  
Existing Major Road
  - 已落實主要道路  
Committed Major Road
  - 規劃中的主要道路  
Major Road under Planning
  - 已建設土地  
Built-up Area
  - 維多利亞港  
Victoria Harbour
  - 現有 / 擬議海岸公園  
Existing / Proposed Marine Park
  - 主要保育地區  
Major Conservation Areas
  - 具潛力作別類發展用地 (須修訂大綱圖)  
(Potential Housing Site Subject to Plan Amendments)  
Potential Housing Site Subject to Plan Amendments  
(Estimated availability 2014/15 to 2018/19 or after)
  - 短、中、長期土地供應  
Short to Medium Term Land Supply
  - 起動九龍東  
Energizing Kowloon East
  - 中、長期土地供應  
Medium to Long Term Land Supply
  - 東大嶼都會的初步概念  
East Lantau Metropolis Preliminary Concept
  - 填海以外的填海地點  
Reclamation Outside Victoria Harbour
  - 建議遷往岩洞的政府設施  
Proposed Government Facilities for Relocation to Rock Caverns
  - 城市地下空間發展：策略性地區先導研究  
Pilot Study on Underground Space Development in Selected Strategic Urban Areas
  - 建議探討的鐵路走廊  
Possible Rail Corridor for Further Examination
  - 建議探討的公路走廊  
Possible Road Corridor for Further Examination



# 規劃師的核心價值

- 以人為本, 照顧社會上不同需要, 特別是弱勢社群
- 擁有長遠願景及清晰發展目標
- 以個別地區特有的地理, 環境, 微氣候, 人口分佈, 城市發展等因素作為規劃的基礎
- 善用土地資源
- 保護環境. 節約能源
- 願意為理想和理念發聲
- 鼓勵公眾參與規劃過程



謝謝!