

Work Sheet 1:
Polar Research

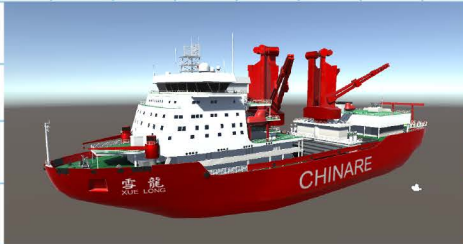
- 📍 Xuelong's cabin
- 📍 'Arctic Expedition' video



Question 1.1

Xuelong is China's largest _____.

- A. submarine
- B. icebreaking polar research vessel
- C. rescue boat
- D. cruise ship



Question 1.2

Scientists drill the sea floor for deep sea mud cores. Sea mud samples are collected from different representative depths for analysis. Why do they treat the samples in this way? What is the purpose of analysing sea mud?

Question 1.3

Inspectors have conducted various studies during the voyage and in the Arctic Research District. After watching the video, name two of these studies and briefly describe their objectives.

Research 1 :

Objectives :

Research 2 :

Objectives :



ice core drilling



sea floor drilling with gravity corer



releasing weather balloons



trawling